



Beaufort County Public Works
Stormwater Infrastructure
Project Summary

Project Summary: Lowcountry Montessori School

Activity: Special Project

Duration: 11/19/18-01/29/19

Narrative Description of Project:

Assembled (2) catch basins and pipe for Stormwater replica play area.

2019-002 / Lowcountry Montessori School

	Labor Hours	Labor Cost	Equipment Cost	Material Cost	Contractor Cost	Indirect Labor	Total Cost
AUDIT / Audit Project	1.0	\$21.79	\$0.00	\$0.00	\$0.00	\$0.00	\$21.79
CBINS / Catch basin - installed	30.0	\$676.70	\$95.19	\$407.77	\$0.00	\$276.50	\$1,456.16
HAUL / Hauling	25.5	\$558.95	\$523.40	\$141.44	\$0.00	\$324.45	\$1,548.24
LM / Loading Materials	9.0	\$177.63	\$49.33	\$8.84	\$0.00	\$73.26	\$309.06
PP / Project Preparation	15.0	\$461.70	\$134.79	\$22.23	\$0.00	\$139.30	\$758.02
2019-002 / Lowcountry Montessori School Sub Total	80.5	\$1,896.77	\$802.71	\$580.28	\$0.00	\$813.51	\$4,093.27
Grand Total	80.5	\$1,896.77	\$802.71	\$580.28	\$0.00	\$813.51	\$4,093.27

Before



During



After



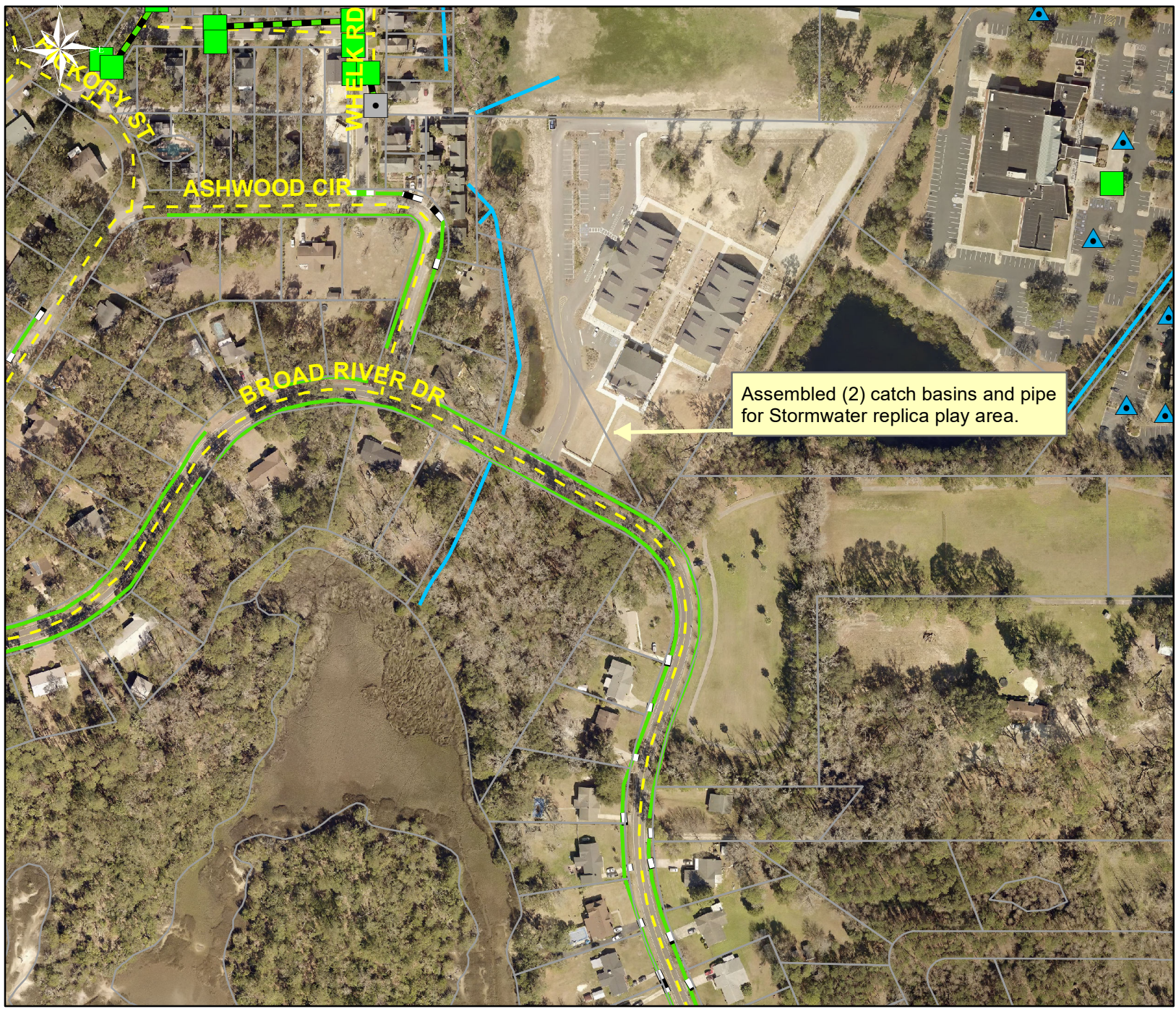
Project: Lowcountry
Montessori
School

Activity: Special
Project

Project #:
2019-002

Township/SW Dist:
Port Royal Island/6

Completed:
January 2019



Legend	
Drainage Type	
	Access Pipe
	Bleeder Pipe
	Channel Pipe
	Channel
	Stream
	Crossline Pipe
	Driveway Pipe
	Lateral
	Lateral Pipe
	River
	Road Pipe
	Roadside
	Roadside Pipe



1 inch = 250 feet